

06.12.2016

TEMA TEHNICA DE PROIECTARE

1. DATE GENERALE:

- 1.1. Denumirea lucrării: Montat linii azot pe refulare compresor 77/78-C114.
- 1.2. Instalatia (serviciul) beneficiara: Aria de Productie – Sector 1
- 1.3. Amplasament: Instalatia DAV-HPM-Fci H2

- 1.4. Documente si documentatii de referinta:, P&ID Fci H2

2. NECESITATE SI OPORTUNITATE:

Pentru pornirea dupa revizie sau pentru activarea catalizatorului de la fabricile de hidrogen este necesar un debit de 30 Nm³/tub de azot (aprox 1000 Nm³/fabrica). Este necesar montarea unei linii fixe Dn80 pe refularea suflantei 77/78-C114 (conducta 3"NG123-B10LCS-1"P), prevazut cu doua ventile de izolare, scurgere + blinda ochelar, conform anexa. Ambele linii de azot vor fi prevazute cu camera de masura.

3. PRINCIPALELE CERINTE:

- 3.1. Elaborare proiect de executie linie azot Dn80 pe refularea suflantei 77/78-C114, conform anexa.

4. DESCRIEREA SOLUTIEI PROPUSE:

- 4.1. Tehnologie: Realizarea unui proiect de montaj
- 4.2. Descrierea solutiei propuse pe categorii de lucrari:
(In cazul in care sunt necesare descrieri mai ample – schite privind amplasarea, scheme tehnologica etc – este obligatorie anexarea acestora la tema)

Nr. crt.	Categoriile de lucrari	Descriere sumara	Documente existente	Observatii
1	Tehnologii	NU		
2	Utilaje	DA		
3	Montaj utilaj si leg. conducte	DA		
4	Constructii beton	NU		
5	Constructii metalice	NU		
6	Instalatii apa-canal	NU		
7	Instalatii electrice ²⁾	NU		
8	Instalatii AMC ¹⁾	DA		
9	Utilitati (aer, azot, apa etc)	NU		
10	Instalatii de incalzire	NU		
11	Instalatii de ventilatie	NU		
12	Mecanizare ex:grinda monorai	NU		
13	Alte facilitati	NU		
14	Devize	DA		

1) Reglari, inregistrari, semnalizari, blocari

2) Surse de putere, blocari, iluminat, avertizare P.S.I. si paza, explozometre, telefonie, legaturi echipotentiale etc.

4.3. Dotari: _____

4.4. Deseuri, noxe si masuri de protectie a mediului: Conform normelor in vigoare pentru instalatia F-ci H2

4.5. Factori de risc si propuneri de masuri de tehnica securitatii muncii: Nu se modifica.

4. SURSA DE FINANTARE: BUGET PROIECTE DE REPARATIE

5. RESPONSABIL DIN PARTEA BENEFICIARULUI:

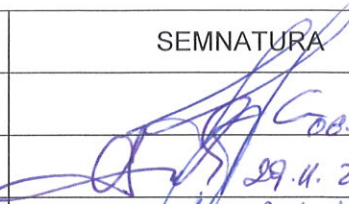


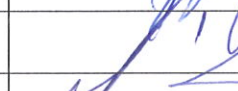
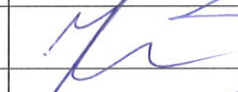


- Numele si prenumele: Manea Emilian

- Functia: Inginer tehnolog sector 1

- Telefon: _____

- Termen executie proiect: 01.01..2017

7. AVIZARE:

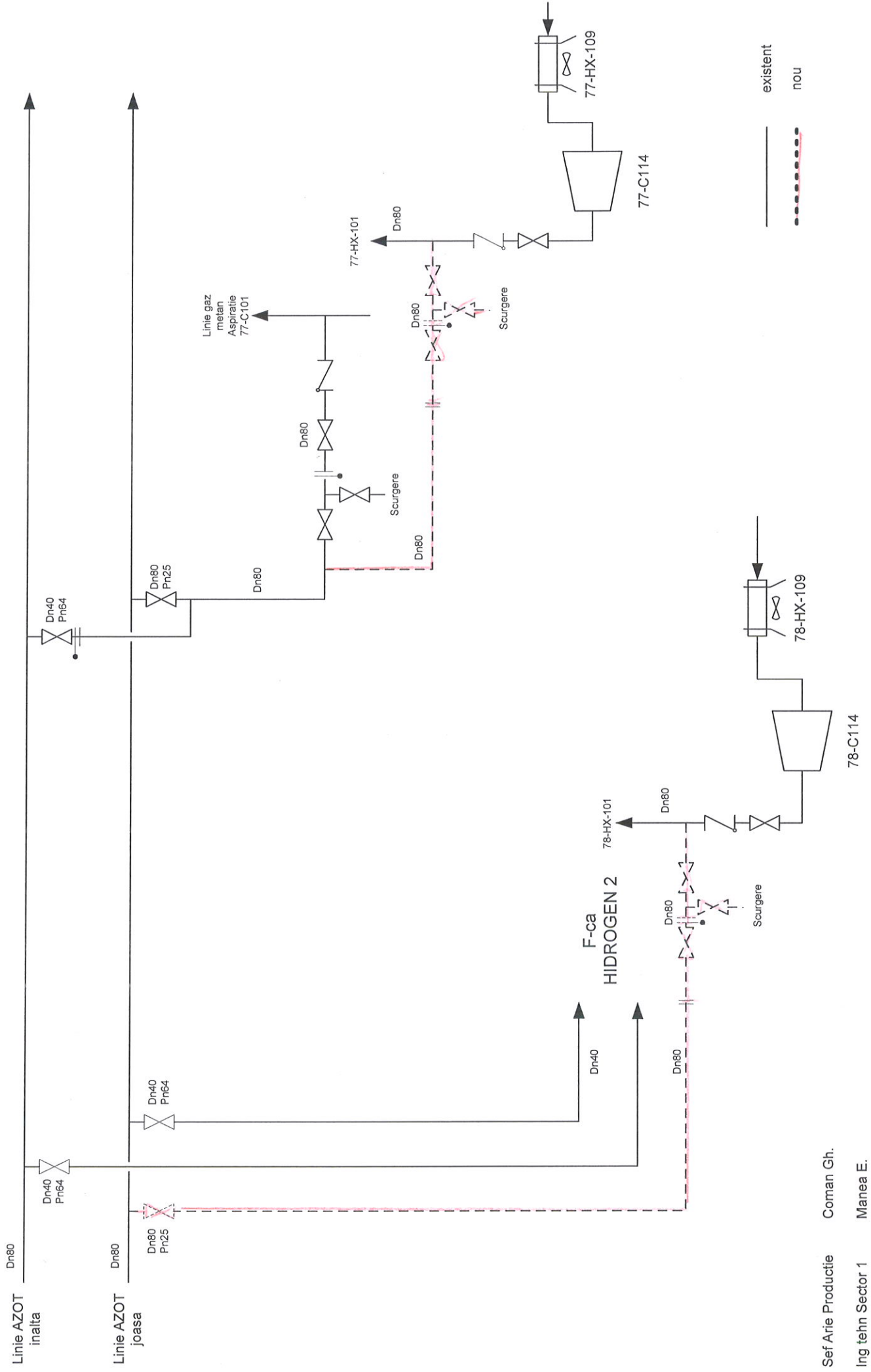
FUNCTIA	NUMELE SI PRENUMELE	SEMNETURA
✓ DIR. GEN. ADJ. REPARATII SI MENTENANTA UTILAJE	Y. I. EROGOV	 08.12.2016
TEHNOLOG SEF	CATALIN NICULESCU	 29.11.2016
ING. SEF ADJ. PRODUCTIE	PARNAU DANIEL	 29.11.16
ING. SEF MECANIC	DENYS MAKUSHEV	 06.12.16
ING. SEF METROLOG	ION ENE	
ING. SEF ENERGETICIAN	MAXIM GRECOV	
SEF ARIE	GHEORGHE COMAN	 29.11.2016

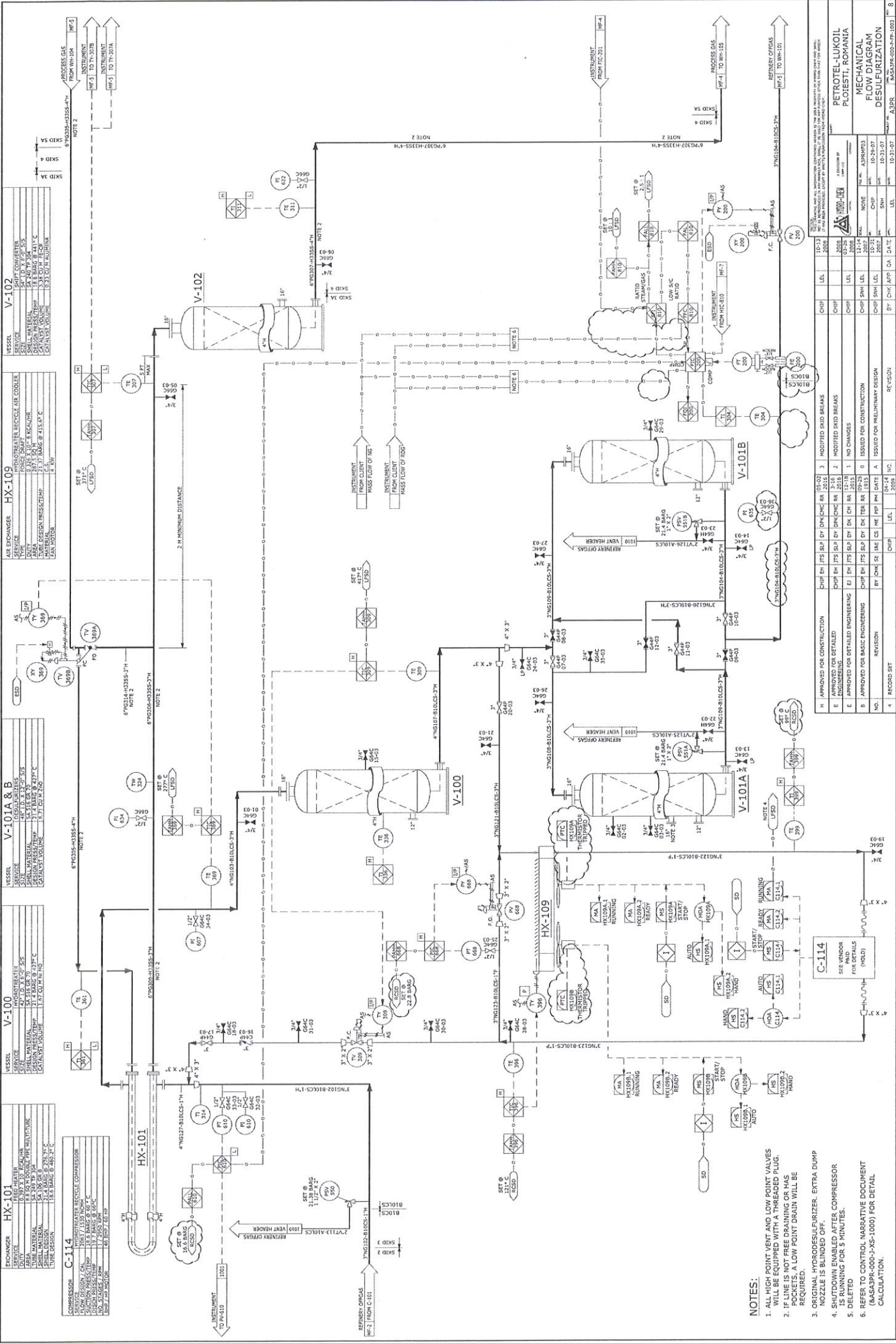
Intocmit :

Sef instalatie

Manea Emilian / 3752

Schema montat linii azot pe refulare suflanta 7778-C114





ITEM	DESCRIPTION
1	DESIGNER
2	CHECKED
3	APPROVED
4	DATE

ITEM	DESCRIPTION
1	DESIGNER
2	CHECKED
3	APPROVED
4	DATE

ITEM	DESCRIPTION
1	DESIGNER
2	CHECKED
3	APPROVED
4	DATE

ITEM	DESCRIPTION
1	DESIGNER
2	CHECKED
3	APPROVED
4	DATE

ITEM	DESCRIPTION
1	DESIGNER
2	CHECKED
3	APPROVED
4	DATE

ITEM	DESCRIPTION
1	DESIGNER
2	CHECKED
3	APPROVED
4	DATE

REVISION NO.	REVISION	DATE	BY	CHKD	APP'D	SCALE	NO.
1	RECORD SET	12-01-14	INC				8
4	REVISION	04-14	INC				8
B	ISSUED FOR PRELIMINARY DESIGN	06-14	INC				8
C	ISSUED FOR CONSTRUCTION	12-15	INC				8
D	APPROVED FOR BASIC ENGINEERING	12-15	INC				8
E	APPROVED FOR DETAILED ENGINEERING	12-15	INC				8
F	APPROVED FOR CONSTRUCTION	12-15	INC				8
G	ISSUED FOR CONSTRUCTION	12-15	INC				8
H	APPROVED FOR DETAILED ENGINEERING	12-15	INC				8
I	APPROVED FOR CONSTRUCTION	12-15	INC				8
J	MODIFIED SHEET BREAKS	12-15	INC				8

NOTES:

- ALL HIGH POINT VENT AND LOW POINT VALVES WILL BE EQUIPPED WITH A THREADED PLUG.
- IF LINE IS NOT FREE DRAINING OR HAS POCKETS, A LOW POINT DRAIN WILL BE REQUIRED.
- ORIGINAL HYDRODESULFURIZER - EXTRA DUMP NOZZLE IS BLENDED OFF.
- SHUTDOWN ENABLED AFTER COMPRESSOR IS RUNNING FOR 5 MINUTES.
- DELETED.
- REFER TO CONTROL NARRATIVE DOCUMENT (BASAPR-000-JAS-1000) FOR DETAIL CALCULATION.