

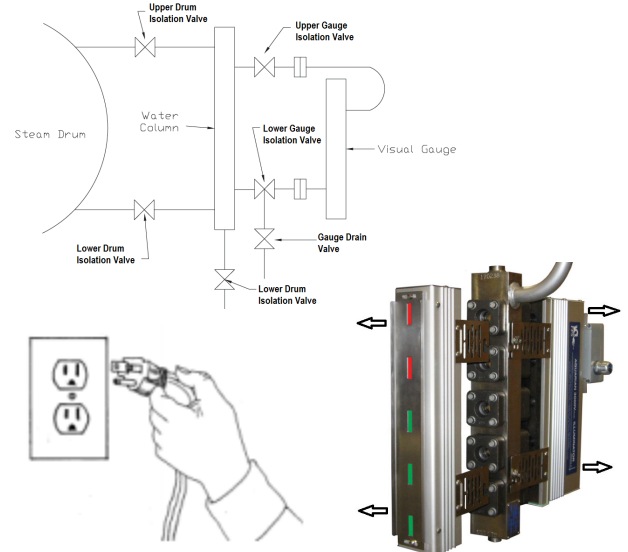


IMPORTANT INSTRUCTIONS FOR INSTALLING AQUARIAN 3000Visual Gauge BI-COLOUR GAUGE REBUILD KIT P/N 9320-0110

1. Ensure that the gauge is properly isolated, depressurized and cooled down before performing any maintenance.

Close the **Upper and Lower Gauge Isolation Valves**
SLOWLY open the gauge drain valve until fully open.
Wait at least two minutes for the gauge to depressurize.

If required by your facility management:
Close the Upper and Lower drum isolation valves,
SLOWLY open the column drain valve until fully open.

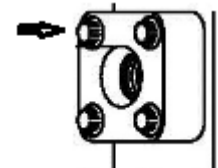


2. De-energize (turn the power off) to the gauge illuminator and remove the gauge Illuminator and Level Display.

3. Regular maintenance: you will **replace all port kits at the same time**. Remove the gauge from the connections and perform maintenance on a workbench. If you are replacing the port kit because of a pre-mature leak, this can be done with the gauge isolated in line.

4. Use a 3/8 inch 12 Point socket to remove the cap screws (10) and remove the port cover. Loosen and remove bolts using the corner to corner method.

5. Remove all parts from the port cover and the port in the gauge body



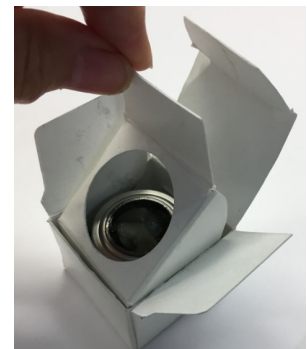
6. Wipe the Port Cover with a clean cloth to ensure all debris is removed.



Clean each port in the gauge Body using a wire brush and wipe clean

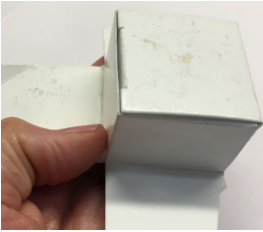
7. Open the box and using the insert tab lift the insert from the box.

DO NOT TOUCH THE MICA



8. Carefully flip the box upside down in the palm of your hand and place the port cover over top of the components.

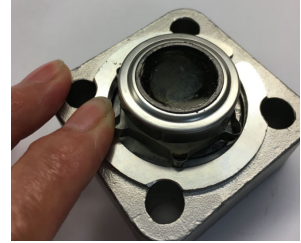
Palm of your hand



Place port cover over top of the components



Push the retaining spring in place



9. **If the components become loose**, load the components in the port cover as follows:
2-Belleville washers (cone up) in the same direction. These are pre-lubricated

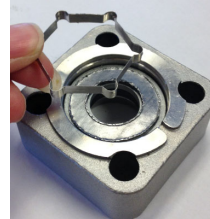


1 Flat Washer

1 Cushion Gasket

1 Retaining Spring

and the Port Kit
Do Not touch the mica

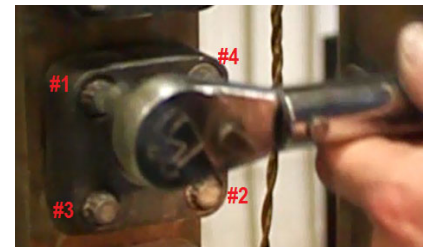
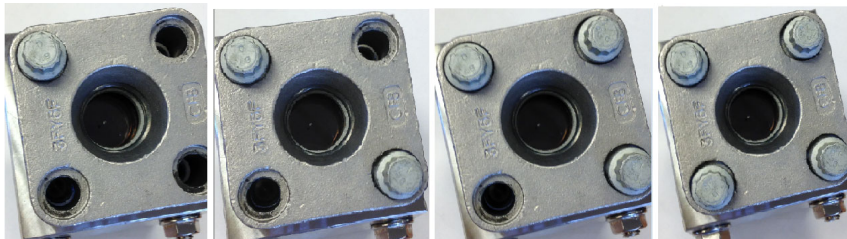


10. **Replace ALL port kits at the same time.** The Port Cover is now ready for installation on the gauge body.

11. Lubricate the threads and head of the cover bolts with a high temperature Anti-Seize pure nickel compound.

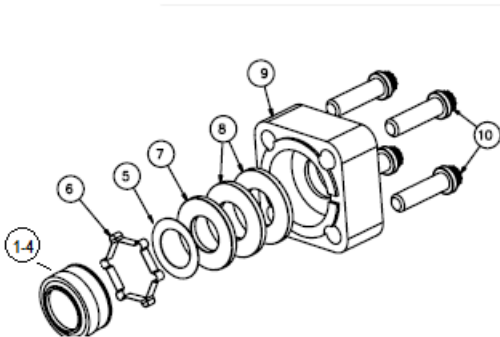
12. Insert the cover assembly into the gauge body with the cover vent slot oriented toward the wide side of the gauge body.

13. Install the cover bolts in a cross pattern, tighten each by hand a little at a time until snug.
Do not use a power driver to torque the bolts. A torque wrench must be used. Tighten Bolt # 1 one turn, then cross to # 2, then # 3 Cross to # 4 tightening one turn at a time repeating until all bolts are torque uniformly to 30 to 35 ft-lbs (41 to 48 Nm). When torque is complete the cover should be metal to metal against the gauge body.



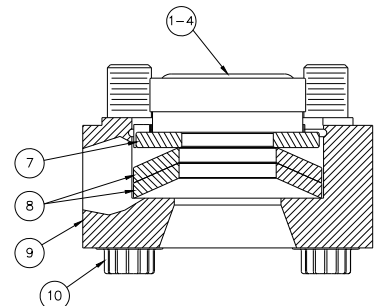
14. Re-install the illuminator and level display.

15. If the boiler is at pressure, the gauge must be heated very slowly to prevent damage to the glass and mica. Check that the drain valves are fully open. Crack open the upper gauge isolation valve. Wait 15 minutes. Slowly shut the drain valves, one turn every 5 minutes. When the drain valve is fully shut, fully open the upper and lower gauge isolation valves.



Full Kit Port Assembly P/N 9320-0110			
ITEM	QTY	DESCRIPTION	P/N
1	1	GASKET RETAINER	Assembled as a kit
2	1	SEALING GASKET	
3	2	MICA	
4	1	GLASS	
5	1	CUSHION GASKET	
6	1	GLASS RETAINING SPRING	
7	1	FLAT WASHER	
8	2	BELLEVILLE WASHER	9940-0200
9	1	PORT COVER	
10	4	COVER BOLT	

Item 9 and 10 sold separately



FOSSIL POWER SYSTEMS INC.

www.fossil.ca email: sales@fossil.ca

Phone: 1-902-468-2743

Doc # 9340-1511